



MAHARASHTRA GRAMIN BANK

(A Scheduled Bank established by Govt. of India.)
Sponsor Bank : Bank of Maharashtra



MAHARASHTRA GRAMIN BANK
HEAD OFFICE: CIDCO, AURANGABAD

TENDER FORM (2nd Call)

PROVIDING ,SUPPLYING ,INSTALLATION AND COMMISSIONING OF LIFTS (2 No.s) IN MULTISTORIED BUILDING, HAVING GROUND FLOOR AND UPPER FOUR FLOORS FOR HEAD OFFICE, OTHER OFFICES AND RESIDENTIAL ACCOMODATION FOR MAHARASHTRA GRAMIN BANK AT , PLOT NO. 42 SITUATED IN GROWTH CENTER OF NAGAR-IV IN CIDCO WALUJ, MAHANAGAR, AURANGABAD , VILLAGE-GOLWADI, AURANGABAD(MAHARASHTRA)

LAST DATE FOR SUBMISSION OF TENDERS:

27/11/2020 upto 4.00 p.m./16.00HRS

AT HEAD OFFICE, 35, "JIVANSHREE, SECTOR 'G', TOWN CENTRE, CIDCO, AURANGABAD-431 003

TOTAL NO. OF PAGES = 12 NOS.

Including 03 No. of Drawings



MAHARASHTRA GRAMIN BANK

Head Office, 35, “Jivanshree”, Sector -G, Town Centre,
CIDCO Aurangabad -431003

TENDER NOTICE : 2nd CALL

Sealed tenders on **Turnkey basis** are invited from Lift Manufacturers / Lift companies (**Kone/ Schindler/Otis / Johnson**) for installation of Lifts in Multistoried Building, having ground floor and upper Four floors for Head office, other offices and Residential accommodation for **Maharashtra Gramin Bank ON , PLOT NO. 42 SITUATED IN GROWTH CENTER OF NAGAR-IV IN CIDCO WALUJ, MAHANAGAR, VILLAGE-GOLWADI, AURANGABAD(MAHARASHTRA)**. The total work is to be completed within **100 Days** time from the date of work order. The blank tender document shall be available at the office of Maharashtra Gramin Bank, Head Office, 35, “Jivanshree” Sector -G, Town Center, CIDCO, Aurangabad 431003, on payment of **Rs. 3000/- (Rupees Three Thousand only)** by D.D./ pay order as cost of tender form in the name of “Maharashtra Gramin Bank” payable at Aurangabad which is non-refundable. Alternatively, if the tender document is downloaded, the aforesaid cost of tender form shall be enclosed in the form of Demand Draft / Pay Order in name of “Maharashtra Gramin Bank” payable Aurangabad for the cost of tender form. **No cheques shall be accepted.**

The blank tender form shall be available from dated **06-11- 2020 to 26-11-2020** during office hours **upto 17.00 Hrs on 26-11-2020** and they are to be submitted at the above address on or before **27/11/2020 up to 16.00 Hrs.** duly filled in along with a Demand Draft/Pay order drawn for **Rs. 20,000/- (Rupees Twenty Thousand Only)** from any Nationalised Bank/ Scheduled Bank in the name of “Maharashtra Gramin Bank” payable at Aurangabad, towards Earnest money deposit. **No cheques shall be accepted.**

The tender i.e **Technical Bid & Price Bid** will be opened on **27/11/2020 at 16.30 Hrs.** in the presence of the representatives of Lift Manufacturers / Lift companies present at that time. **Tenders without Earnest money deposit will not be considered and shall be outrightly rejected.**

Tenders received **Late after** the date and time of Submission either personally or by post or postal delay will not be considered and summarily will be treated as rejected.

Maharashtra Gramin Bank reserves the right to accept or reject any or all tenders either in whole or in part, without assigning any reasons.

A set of **Sanctioned Building Plans** shall be issued as part of Tender documents, which are to be returned along with the tender submission.

Time of Completion **100 Days from the date of work order**

The bank will not be bound to accept the lowest tender and reserves the right to accept or reject any or all the tenders without assigning any reasons whatsoever.

**Signature of Vender
Tenderer with seal**

Chairman
Maharashtra Gramin Bank
Head office, Aurangabad (M.S.)

NOTICE TO TENDERERS:

1. Sealed tenders on “Turnkey basis” shall be addressed to the **Chairman, Maharashtra Gramin Bank, Head Office, 35, “Jivanshree, Sector ‘G’, Town Centre, CIDCO, Aurangabad-431 003.** and super scribed as “Tender for **PROVIDING ,SUPPLYING ,INSTALLATION AND COMMISSIONING OF LIFTS (2 No.s) IN MULTISTORIED BUILDING, HAVING GROUND FLOOR AND UPPER FOUR FLOORS FOR HEAD OFFICE, OTHER OFFICES AND RESIDENTIAL ACCOMODATION FOR MAHARASHTRA GRAMIN BANK AT , PLOT NO. 42 SITUATED IN GROWTH CENTER OF NAGAR-IV IN CIDCO WALUJ, MAHANAGAR , VILLAGE-GOLWADI, AURANGABAD(MAHARASHTRA)** and sent as to reach this office **not later than 16.00 hours on 27/11/2020** . Tender should be accompanied with **Earnest Money Deposit (EMD) of Rs. 20,000/- (Rupees Twenty Thousand Only) in the form of Demand Draft in favor of Maharashtra Gramin Bank payable at Aurangabad.** Tenders not accompanied with EMD shall be rejected and considered invalid. The earnest money shall be returned to the tenderer if the tender is not accepted or to the unsuccessful tenderer but without any interest. EMD amount deposited by the tenderer, whose tender is accepted, shall be adjusted towards security deposit and shall be released with the final completion of works including certificate for operation of Lift from **PWD /competent authority** and architects completion certificate.
2. No tender shall be accepted after **16.00 hours** on the **27th** day of **November 2020** Tenders received **Late after** the date and time of Submission either personally or by post or postal delay will not be considered and summarily will be treated as rejected
3. Tenders will be opened in the office of **Chairman, Maharashtra Gramin Bank, Head Office, 35; “Jivanshree”, Sector -G Town Centre, CIDCO Aurangabad -431003** on **27th** day of **November 2020** at **16.30 hours** by the The Chairman or his nominee / Authorised reperesntative. The rates tendered by the contractors shall be valid for acceptance for minimum **120 days** from the date of opening.
4. **The Chairman, Maharashtra Gramin Bank, Head Office, 35; “Jivanshree”, Sector -G Town Centre, CIDCO Aurangabad -431003** does not bind himself to accept the lowest or any tender and reserves the right to accept or reject any or all the tenders whether in whole or in part without assigning any reason for doing so. The owner reserves his rights to negotiate with the lowest or any other tender/s.
5. Each of the tender documents is required to be signed by the person or persons submitting the tender in token of his/ their having acquired himself/ themselves with the general conditions, articles of agreement, mode of measurements, **schedule of stoppages, floor heights, no. of openings, site conditions** and the time schedule etc. as laid down. Any tender with any of the documents not signed will be liable to be rejected All the tender documents along with drawings, including the tender conditions and tender form duly filled in and each and every page duly signed with seal are to be submitted with the **“Price Bid”** in Envelope no. 2 as per the Bank's format inclusive of providing Lifts (2No.s) on **turnkey basis** inclusive of GST and other applicable taxes mentioned in the Manner of Submission of Tender and Tender Specifications.

Note: The price should be quoted for both Lifts in total as per the **minimum Requirements and specifications** enclosed with tender form and as per the price schedule format . The **details** of the payment schedule by company shall be enclosed separately along with the Bank,s format of price schedule/PRICE BID.



6. All erasures and alterations made while filling the tender must be attested with initials of the tenderer. Overwriting of figures is not permitted. Failure to comply with either of these conditions will render the tender invalid.
7. All the pages of the tender documents should be signed by the tenderer.
8. The rates quoted by the Vendor should include all charges for scaffolding materials labour, hire for any tools, marking out and clearing of the site as mentioned in the specifications. The rate quoted by the tenderer in the Annexure of probable quantities will be deemed to be for the Complete finished work at site .
9. The rates shall be inclusive of all sales tax, works contract tax, Provident Fund, Insurance etc. levied by any Government or any public body. The contractor shall abide by the rules of Minimum Wage Act and Child Labour Act and keep the owner indemnified regarding the same. The Vendor should take necessary insurance for the work as required under the workman compensation act, labour laws etc. as prevailing.
10. The rates shall be binding to the Vendor, for all the tender items (turn key basis) till the completion of the work respective of variation in market rates of material and labour.
11. The successful tenderer should make their own arrangements to obtain all materials required for the work.
12. The various materials stored on site shall be protected from the fire, floods or rains etc. and the Vendor shall be responsible for any damage caused to the owner for the same.
13. The Vendor shall allow enough facilities to the sub-contractors employed by the owner and should co-operate with them and that small holes etc. made by these sub-contractors to the structure shall be properly corrected by the general Vendor without any prejudice and extra cost whatsoever.
14. The bills shall be prepared by the Vendor in the manner required by the Architect and should be submitted to him. All payments by the Employer/ Bank under this contract shall be made at Aurangabad (M.S).
15. The specifications that are not mentioned or listed in the tender shall **conform to I.S.I. Specifications** and NBC requirements while having prior written consent of the Architect.
16. In case of dispute regarding quality of material, workmanship etc. Shall be accepted as final decision **given by the competent Authority of the Bank.**
17. The contract shall be subject to **Aurangabad** jurisdiction only.
18. **The Successful Tenderer shall submit the Execution drawings, details , as per the Existing Site Conditions of Lift Well etc. to Bank's Architect/Competent Authority before starting the work.**
19. **The Vendor shall submit Commissioning Report duly signed by the Vendor & duly certified by the Service Manager of company .**



20. The Architects for this work is **Ashish Shyamkishor Nashine, 49, Central Bazar Road, Bajaj Nagar, Nagpur-440010** and certification of the Architect shall be required for completion of all work including commissioning and obtaining the license from The PWD/ competent Authority for operating the Lifts.

I/ We hereby declare that I/We have read and understood the above instructions for the guidance of the Tenderer.

Date:

Seal and signature
of Vendor

Manner of Submission of Tender:

The tenders to be submitted in two separate Sealed Envelopes as below:

Envelope No.1 "TD'(Technical Data)

The first envelope clearly marked, as 'Envelope No.1' shall contain the following Documents.

1. Crossed Demand draft for Rs.3000/- (Three thousand only) of any **Nationalized /Scheduled Bank** for the said amount as cost of Blank Tender form which is Non-refundable No cheques shall be accepted. **The Demand draft shall bear the date from the publishing of the tender (2nd Call).**
2. Crossed Demand draft of any **Nationalized /Scheduled Bank** for the said amount of Rs. 20,000/- (Twenty Thousand only)as **Earnest money deposit (EMD) No cheques shall be accepted. The Demand draft shall bear the date from the publishing of the tender (2nd Call).**
3. **Technical Literature and Brochure of the lift offered. The Vender who intends or wish to mention any of the special features of the lift offered & conditions, if any, may do so in its forwarding letter but shall not become the conditional tender**

IMPORTANT NOTE: IF AT THE TIME OF VERIFICATION OF DOCUMENT IT IS FOUND THAT DOCUMENTS ENCLOSED ARE NOT IN ORDER, THE TENDER IS LIABLE TO BE REJECTED

Envelope No.2 "PS'Priced Schedule/Price Bid

The second envelope clearly marked, as '**Envelope No.2**' shall contain the completed Tender document/ **price bid** along with the drawings and details issued with the blank tender forms and the **details of the payment schedule seperataly** duly signed by the Manufacturers / Companies should be enclosed.

If the Bank is satisfied with papers enclosed in the first envelope then only the Envelope No. 2 shall be Opened on the date and time which will be intimated later after scrutiny of documents in envelope No.1 .

Note: - The tenders are to be submitted in two separate sealed envelopes as mentioned above, however if the two separate sealed envelopes are put in one common sealed cover, the Manufacturers / Companies shall mention over the common sealed cover that envelope no. 1 & envelope no.2 are inside the common sealed cover. While opening if it is found that the two separate sealed envelopes are not inside the common sealed cover the tender shall be outrightly rejected.

**Signature of Vendor/
Tenderer with seal**

**Chairman
Maharashtra Gramin Bank
Head office, Aurangabad (M.S.)**

Minimum Technical requirements and specifications for the Lifts :

Two No. Lifts are to be provided in the proposed building including supplying installation and commissioning of Lifts on “Turnkey Basis” for which the minimum mandatory requirements are as follows:

- 1) There shall be **total no. Of 5 openings** i.e. on ground floor or at Entrance floor/Entrance lobby **plus 4 openings on upper 4 No. Floors**
- 2) Height from Entrance Lobby to **ground floor slab top equals to 2.70m** rest of the floor heights of **each floor (4 No.s) shall be 3.60m** from floor to Slab Top.
- 3) The lift shaft sizes as per the sanctioned plan are **1650x1500mm** (Sanctioned Drawing/Plan enclosed).
- 4) The Lift shall be minimum **6 passenger** Lift each with load capacity of **408 kg.(Minimum)**.
- 5) The Lift shall be **gearless and Machine roomless**.
- 6) It shall be provided with central opening and closing.
- 7) The lift car shall be provided with standard stainless steel Handrail.
- 8) The lift car inside shall be standard steel of **304 Grade**.
- 9) The car doors shall also be of stainless steel finish **304 Grade**.
- 10) Provision of Automatic cutoff of Light and Fan.
- 11) Car operating panels shall have provision of car position indicator, indication of overload/Overload detection function, Alarm horn/Alarm bell.
- 12) The lift shall have automatic evacuation for the nearest floor in case of power failure.
- 13) Provision of ceiling Lighting LED Fixtures.
- 14) The minimum car lift speed shall be **1.00Mps** (1 Meter per second).
- 15) The car doors shall also be of stainless steels standard **304grade** ;for the standard **304 grade stainless steel test certificate** must be issued with other tests and other mandatory certificates.
- 16) The Flooring of the Lift car shall be of Granite & provided by the lift vender.
- 17) Out of Service key Function
- 18) Ahead remote monitoring Function for realtime performance data and predictive maintenance. (Ahead service function)
- 19) GAP Filling Sheet to be provided for door frame.
- 20) Metal Skirting to be provided in the car.
- 21) Metal buffer Blocks or Similar Technology to be installed by the company in the shaft under the lift car.

- 22) Attendant service function (or manual operation) shall be provided (lift door standby function)
- 23) Minimum Two hours fire Rated lining on door. (For the standard Lining certificate must be issued with other tests and other mandatory certificates)
- 24) For the effective execution of installation and the commissioning of lift scaffolding if required shall be arranged by the civil contractor of the bank.
- 25) The Bank shall pay all necessary fees for procuring permits / Licenses from statutory / Regulatory Authorities / PWD office / Permits and Inspection fees **however** the Lift companies / Vendor shall provide all necessary assistance and support towards technical documentation and shall be responsible to clarify all technical queries as may be raised by statutory authorities.
- 26) The Tenderer / Vendor shall be presumed to have carefully examined site, site conditions, existing Lift shaft, their measurements etc. and specifications of the work and would have fully acquainted themselves with all details of the site and with all necessary confirmation and data pertaining to the work prior to the tendering for the work.

NOTE: If only one tender is received or only one tender is found technically feasible and qualified it shall be considered for further processing.

**Signature of Vendor/
Tenderer with seal**

**Chairman
Maharashtra Gramin Bank
Head office, Aurangabad (M.S.)**



TENDER FOR Providing, Supplying, Installation and Commissioning of Lifts (2 No.s) in Multistoried Building, Having Ground Floor and Upper Four Floors For Head Office ,Other offices and Residential Accomodation for Maharashtra Gramin Bank at, Plot No. 42 Situated in Growth center of Nagar-IV in Cidco Waluj, Mahanagar, Aurangabad, Village-Golwadi, Aurangabad (Maharashtra).

NET Cost of one No. Lift each = RS _____

Rupees(words) = _____

(A) Total Cost of Two no. of lifts

(ie. Cost of 1 lift X 2 No.s) = Rs. _____

Rupees(words) = _____

Add CGST at 9% on (A)= = Rs. _____

Rupees(words) = _____

Add SGST at 9% on (A)= = Rs. _____

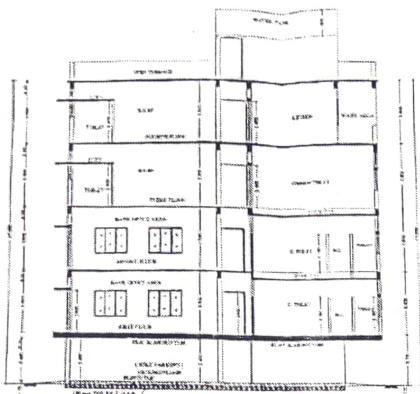
Rupees(words) = _____

Grand Total = Rs. _____

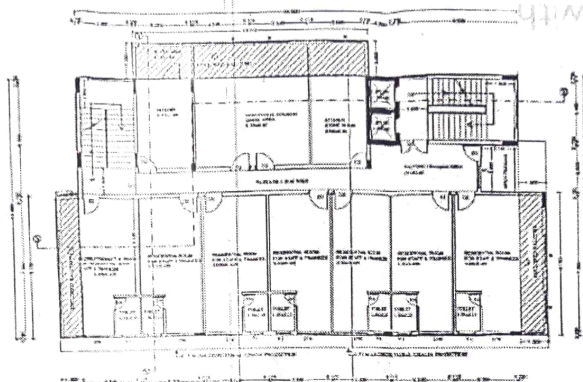
Rupees(words) = _____

Signature of Vendor/
Tenderer with seal

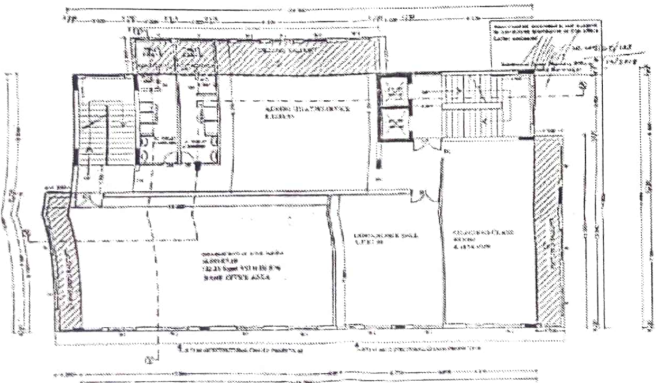
Scanned with CamScanner



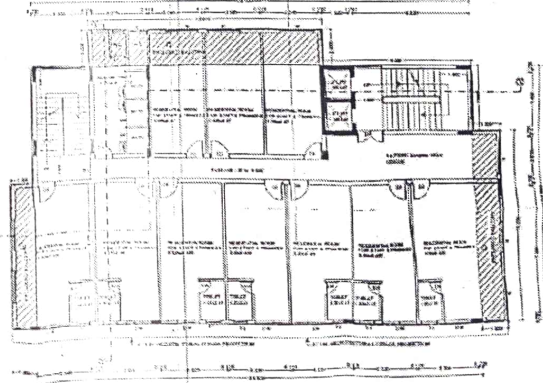
SECTION AT 'Y-Y'



FOURTH FLOOR PLAN



SECOND FLOOR PLAN



THIRD FLOOR PLAN

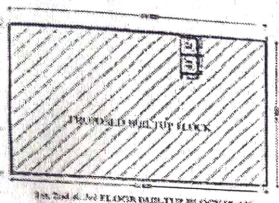
SCHEME OF OPENING

FLOOR	USE	OCCUPATION
1	OFFICE	OFFICE
2	OFFICE	OFFICE
3	OFFICE	OFFICE
4	OFFICE	OFFICE
5	OFFICE	OFFICE
6	OFFICE	OFFICE
7	OFFICE	OFFICE
8	OFFICE	OFFICE
9	OFFICE	OFFICE
10	OFFICE	OFFICE
11	OFFICE	OFFICE
12	OFFICE	OFFICE
13	OFFICE	OFFICE
14	OFFICE	OFFICE
15	OFFICE	OFFICE
16	OFFICE	OFFICE
17	OFFICE	OFFICE
18	OFFICE	OFFICE
19	OFFICE	OFFICE
20	OFFICE	OFFICE
21	OFFICE	OFFICE
22	OFFICE	OFFICE
23	OFFICE	OFFICE
24	OFFICE	OFFICE
25	OFFICE	OFFICE
26	OFFICE	OFFICE
27	OFFICE	OFFICE
28	OFFICE	OFFICE
29	OFFICE	OFFICE
30	OFFICE	OFFICE
31	OFFICE	OFFICE
32	OFFICE	OFFICE
33	OFFICE	OFFICE
34	OFFICE	OFFICE
35	OFFICE	OFFICE
36	OFFICE	OFFICE
37	OFFICE	OFFICE
38	OFFICE	OFFICE
39	OFFICE	OFFICE
40	OFFICE	OFFICE
41	OFFICE	OFFICE
42	OFFICE	OFFICE
43	OFFICE	OFFICE
44	OFFICE	OFFICE
45	OFFICE	OFFICE
46	OFFICE	OFFICE
47	OFFICE	OFFICE
48	OFFICE	OFFICE
49	OFFICE	OFFICE
50	OFFICE	OFFICE
51	OFFICE	OFFICE
52	OFFICE	OFFICE
53	OFFICE	OFFICE
54	OFFICE	OFFICE
55	OFFICE	OFFICE
56	OFFICE	OFFICE
57	OFFICE	OFFICE
58	OFFICE	OFFICE
59	OFFICE	OFFICE
60	OFFICE	OFFICE
61	OFFICE	OFFICE
62	OFFICE	OFFICE
63	OFFICE	OFFICE
64	OFFICE	OFFICE
65	OFFICE	OFFICE
66	OFFICE	OFFICE
67	OFFICE	OFFICE
68	OFFICE	OFFICE
69	OFFICE	OFFICE
70	OFFICE	OFFICE
71	OFFICE	OFFICE
72	OFFICE	OFFICE
73	OFFICE	OFFICE
74	OFFICE	OFFICE
75	OFFICE	OFFICE
76	OFFICE	OFFICE
77	OFFICE	OFFICE
78	OFFICE	OFFICE
79	OFFICE	OFFICE
80	OFFICE	OFFICE
81	OFFICE	OFFICE
82	OFFICE	OFFICE
83	OFFICE	OFFICE
84	OFFICE	OFFICE
85	OFFICE	OFFICE
86	OFFICE	OFFICE
87	OFFICE	OFFICE
88	OFFICE	OFFICE
89	OFFICE	OFFICE
90	OFFICE	OFFICE
91	OFFICE	OFFICE
92	OFFICE	OFFICE
93	OFFICE	OFFICE
94	OFFICE	OFFICE
95	OFFICE	OFFICE
96	OFFICE	OFFICE
97	OFFICE	OFFICE
98	OFFICE	OFFICE
99	OFFICE	OFFICE
100	OFFICE	OFFICE

PROPOSED PLAN FOR COMMERCIAL CUM RESIDENTIAL BUILDING ON PLOT No. 42 SITUATED AT BANGWORTH CENTER OF AURANGABAD IN MEDICAL COLONY BANGWORTH, AURANGABAD, DIST. No. 33 (PART) YASAGOL, GULWADI, TAPASGI & DIST. AURANGABAD, BELONGING TO MAHARASHTRA GRAMIN BANK, HEAD OFFICE, AURANGABAD.

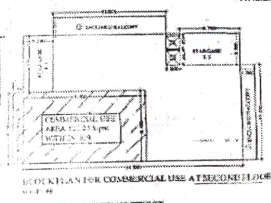
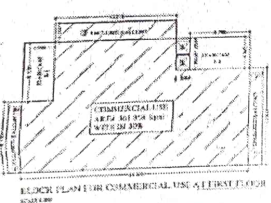
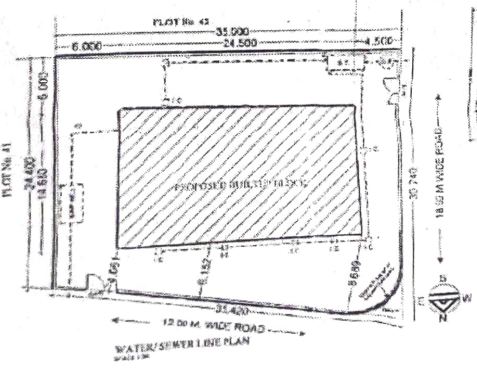
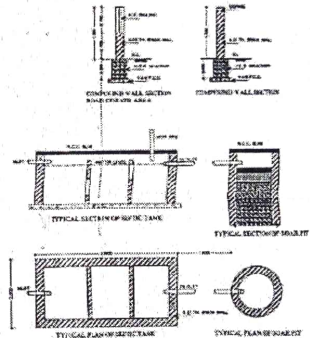
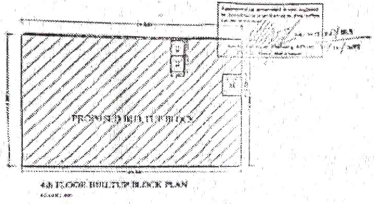
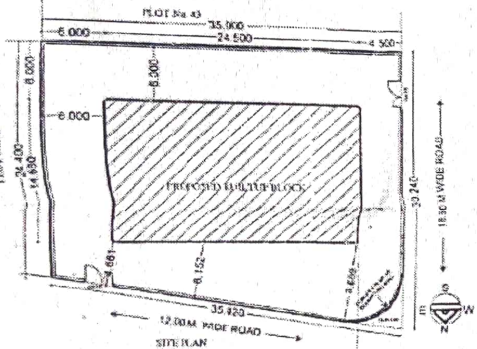
ARCHITECT:
APRIL & NORTON
 101, 102, 103, 104, 105, 106, 107, 108, 109, 110, 111, 112, 113, 114, 115, 116, 117, 118, 119, 120, 121, 122, 123, 124, 125, 126, 127, 128, 129, 130, 131, 132, 133, 134, 135, 136, 137, 138, 139, 140, 141, 142, 143, 144, 145, 146, 147, 148, 149, 150, 151, 152, 153, 154, 155, 156, 157, 158, 159, 160, 161, 162, 163, 164, 165, 166, 167, 168, 169, 170, 171, 172, 173, 174, 175, 176, 177, 178, 179, 180, 181, 182, 183, 184, 185, 186, 187, 188, 189, 190, 191, 192, 193, 194, 195, 196, 197, 198, 199, 200, 201, 202, 203, 204, 205, 206, 207, 208, 209, 210, 211, 212, 213, 214, 215, 216, 217, 218, 219, 220, 221, 222, 223, 224, 225, 226, 227, 228, 229, 230, 231, 232, 233, 234, 235, 236, 237, 238, 239, 240, 241, 242, 243, 244, 245, 246, 247, 248, 249, 250, 251, 252, 253, 254, 255, 256, 257, 258, 259, 260, 261, 262, 263, 264, 265, 266, 267, 268, 269, 270, 271, 272, 273, 274, 275, 276, 277, 278, 279, 280, 281, 282, 283, 284, 285, 286, 287, 288, 289, 290, 291, 292, 293, 294, 295, 296, 297, 298, 299, 300, 301, 302, 303, 304, 305, 306, 307, 308, 309, 310, 311, 312, 313, 314, 315, 316, 317, 318, 319, 320, 321, 322, 323, 324, 325, 326, 327, 328, 329, 330, 331, 332, 333, 334, 335, 336, 337, 338, 339, 340, 341, 342, 343, 344, 345, 346, 347, 348, 349, 350, 351, 352, 353, 354, 355, 356, 357, 358, 359, 360, 361, 362, 363, 364, 365, 366, 367, 368, 369, 370, 371, 372, 373, 374, 375, 376, 377, 378, 379, 380, 381, 382, 383, 384, 385, 386, 387, 388, 389, 390, 391, 392, 393, 394, 395, 396, 397, 398, 399, 400, 401, 402, 403, 404, 405, 406, 407, 408, 409, 410, 411, 412, 413, 414, 415, 416, 417, 418, 419, 420, 421, 422, 423, 424, 425, 426, 427, 428, 429, 430, 431, 432, 433, 434, 435, 436, 437, 438, 439, 440, 441, 442, 443, 444, 445, 446, 447, 448, 449, 450, 451, 452, 453, 454, 455, 456, 457, 458, 459, 460, 461, 462, 463, 464, 465, 466, 467, 468, 469, 470, 471, 472, 473, 474, 475, 476, 477, 478, 479, 480, 481, 482, 483, 484, 485, 486, 487, 488, 489, 490, 491, 492, 493, 494, 495, 496, 497, 498, 499, 500, 501, 502, 503, 504, 505, 506, 507, 508, 509, 510, 511, 512, 513, 514, 515, 516, 517, 518, 519, 520, 521, 522, 523, 524, 525, 526, 527, 528, 529, 530, 531, 532, 533, 534, 535, 536, 537, 538, 539, 540, 541, 542, 543, 544, 545, 546, 547, 548, 549, 550, 551, 552, 553, 554, 555, 556, 557, 558, 559, 560, 561, 562, 563, 564, 565, 566, 567, 568, 569, 570, 571, 572, 573, 574, 575, 576, 577, 578, 579, 580, 581, 582, 583, 584, 585, 586, 587, 588, 589, 590, 591, 592, 593, 594, 595, 596, 597, 598, 599, 600, 601, 602, 603, 604, 605, 606, 607, 608, 609, 610, 611, 612, 613, 614, 615, 616, 617, 618, 619, 620, 621, 622, 623, 624, 625, 626, 627, 628, 629, 630, 631, 632, 633, 634, 635, 636, 637, 638, 639, 640, 641, 642, 643, 644, 645, 646, 647, 648, 649, 650, 651, 652, 653, 654, 655, 656, 657, 658, 659, 660, 661, 662, 663, 664, 665, 666, 667, 668, 669, 670, 671, 672, 673, 674, 675, 676, 677, 678, 679, 680, 681, 682, 683, 684, 685, 686, 687, 688, 689, 690, 691, 692, 693, 694, 695, 696, 697, 698, 699, 700, 701, 702, 703, 704, 705, 706, 707, 708, 709, 710, 711, 712, 713, 714, 715, 716, 717, 718, 719, 720, 721, 722, 723, 724, 725, 726, 727, 728, 729, 730, 731, 732, 733, 734, 735, 736, 737, 738, 739, 740, 741, 742, 743, 744, 745, 746, 747, 748, 749, 750, 751, 752, 753, 754, 755, 756, 757, 758, 759, 760, 761, 762, 763, 764, 765, 766, 767, 768, 769, 770, 771, 772, 773, 774, 775, 776, 777, 778, 779, 780, 781, 782, 783, 784, 785, 786, 787, 788, 789, 790, 791, 792, 793, 794, 795, 796, 797, 798, 799, 800, 801, 802, 803, 804, 805, 806, 807, 808, 809, 810, 811, 812, 813, 814, 815, 816, 817, 818, 819, 820, 821, 822, 823, 824, 825, 826, 827, 828, 829, 830, 831, 832, 833, 834, 835, 836, 837, 838, 839, 840, 841, 842, 843, 844, 845, 846, 847, 848, 849, 850, 851, 852, 853, 854, 855, 856, 857, 858, 859, 860, 861, 862, 863, 864, 865, 866, 867, 868, 869, 870, 871, 872, 873, 874, 875, 876, 877, 878, 879, 880, 881, 882, 883, 884, 885, 886, 887, 888, 889, 890, 891, 892, 893, 894, 895, 896, 897, 898, 899, 900, 901, 902, 903, 904, 905, 906, 907, 908, 909, 910, 911, 912, 913, 914, 915, 916, 917, 918, 919, 920, 921, 922, 923, 924, 925, 926, 927, 928, 929, 930, 931, 932, 933, 934, 935, 936, 937, 938, 939, 940, 941, 942, 943, 944, 945, 946, 947, 948, 949, 950, 951, 952, 953, 954, 955, 956, 957, 958, 959, 960, 961, 962, 963, 964, 965, 966, 967, 968, 969, 970, 971, 972, 973, 974, 975, 976, 977, 978, 979, 980, 981, 982, 983, 984, 985, 986, 987, 988, 989, 990, 991, 992, 993, 994, 995, 996, 997, 998, 999, 1000.

CS Scanned with CamScanner



PLOT AREA = 647.41 Sqm
PERMISSIBLE STA. 150 = 1421.22 Sqm

SER. NO.	FLOOR	BUILT-UP AREA (A)	STAIRCASE & LIFT AREA (B)	PERM. BUILDING FACILITY AREA (C)	PROPOSED MULTI-STOREY COLOURED (D)	PERMISSIBLE TOTAL COMMERCIAL 30% OF 1825.134 Sqm (A+C) = 484.740 Sqm	REMARKS
1	GR. FLOOR	7,803 Sqm	47,523 Sqm				
2	1st FLOOR	354.71 Sqm		53,206 Sqm	53,115 Sqm	PROVIDED 26.11 sqm sqm	
3	2nd FLOOR	354.71 Sqm		53,206 Sqm	53,115 Sqm	PROVIDED 122.25 Sqm	
4	3rd FLOOR	354.71 Sqm		53,206 Sqm	53,115 Sqm		
5	4th FLOOR	354.71 Sqm		53,206 Sqm	53,115 Sqm		
6	TOTAL	1420.949 Sqm	107,242.52 Sqm = 25.46 Lpm	211,991 Sqm	208,185 Sqm	484.108 Sqm	



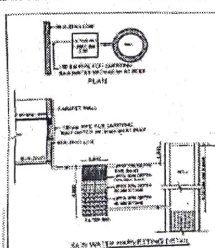
PERMISSIBLE AREA CALCULATION AS PER PROVISION NO. 10, 11, 12, 13 & 14 OF THE BUILDING REGULATIONS 1974 (SEE PAGE NO. 10)

AS PER CODE OF PRACTICE & STANDARDS

PERMISSIBLE TOTAL COMMERCIAL AREA = 484.740 SQM

PROPOSED TOTAL COMMERCIAL AREA = 484.108 SQM

PERMISSIBLE TOTAL COMMERCIAL AREA IS MORE THAN PROPOSED TOTAL COMMERCIAL AREA. THEREFORE, THE PROPOSED TOTAL COMMERCIAL AREA IS ACCEPTABLE.



SHEET NO. 01 OF 01

PROJECT: COMMERCIAL BUILDING FOR GROWTH CENTER OF INDIAN IN CHINA WALLS MUMBAI, DISTRICT: MUMBAI, STATE: GUJARAT

CLIENT: MUMBAI DEVELOPMENT AUTHORITY

DESIGNER: MUMBAI DEVELOPMENT AUTHORITY

DATE: 15/08/2024

SCALE: 1:500

APPROVED BY: [Signature]

PROJECT ENGINEER: [Signature]

DESIGNER: [Signature]

CHECKER: [Signature]

DATE: 15/08/2024

PROJECT: COMMERCIAL BUILDING FOR GROWTH CENTER OF INDIAN IN CHINA WALLS MUMBAI, DISTRICT: MUMBAI, STATE: GUJARAT

CLIENT: MUMBAI DEVELOPMENT AUTHORITY

DESIGNER: MUMBAI DEVELOPMENT AUTHORITY

DATE: 15/08/2024

SCALE: 1:500

APPROVED BY: [Signature]

PROJECT ENGINEER: [Signature]

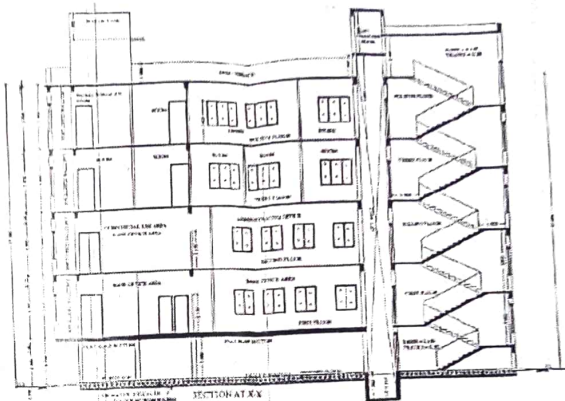
DESIGNER: [Signature]

CHECKER: [Signature]

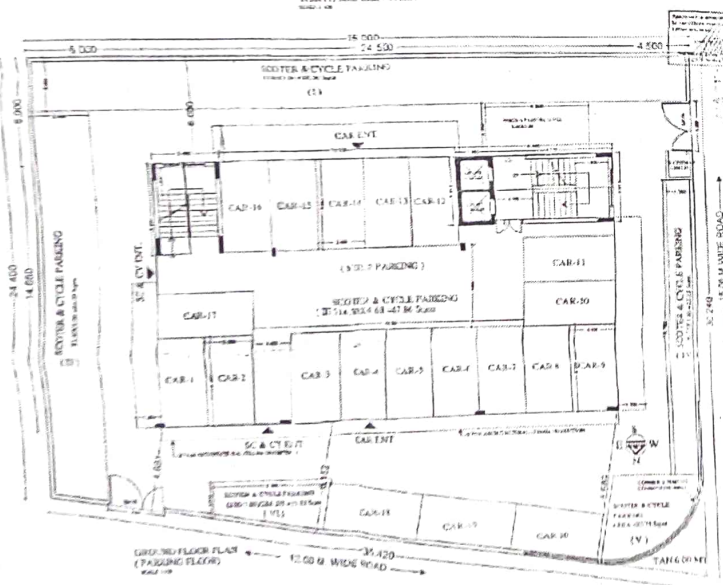
DATE: 15/08/2024



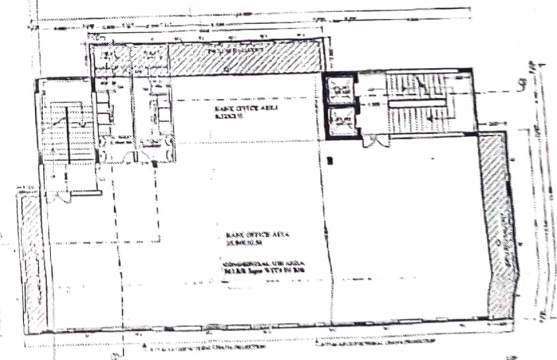
NORTH SIDE ELEVATION



SECTION AT XX



FIRST FLOOR PLAN (PARKING FLOOR)



FIRST FLOOR PLAN

Maharashtra Government
 ARCHITECT
 [Signature]
 [Stamp]

PROJECT NO. 100/2019
 DATE: 10/10/2019
 SCALE: 1/40
 SHEET NO. 1/1

PROPOSED PLAN FOR COMMERCIAL USE RESIDENTIAL BUILDING IN PLOT NO. 42, SITUATED IN URBAN CENTER OF NAGARAVAN IN DISTRICT MUMBAI, PUNJAB ROAD, WEST OF 58 PARTS, VILLAGE SONWADI, TANGER & DIST. ALURANGABAD, (MAHARASHTRA) DIST. DONGARA TO MAHARASHTRA GRAMIN BANK, HEAD OFFICE, ALURANGABAD.